



The Women's Alliance of Southeast Sulawesi (ALPEN SULTRA) is a non-governmental organisation (NGO) based in Kendari, Southeast Sulawesi, Indonesia. ALPEN is dedicated to defending and campaigning for the rights of women and is committed to working towards the eradication of all discrimination, exploitation and violence against the women of Southeast Sulawesi.

ALPEN coordinates a number of programs and campaigns in the following areas: economic development, environment, advocacy and health. ALPEN plays an important role in building the capacity of women in Southeast Sulawesi and works to strengthen the representation of women in the social, economic, political, and cultural sectors.



INTRODUCTION

It is time to eradicate all social, cultural, economic and political discrimination that currently impinges upon the human rights of women everywhere. 1.3 billion people live in poverty across the world – almost 70% of which are women. Women earn approximately 10% of the global income, own about 1% of property worldwide and make up over 60% of the planet's illiterate population. Only 10% of parliamentary seats in the world are held by women.

However, in developing countries, women are responsible for around 60% of all food production and manage up to 70% of small businesses, in addition to looking after families and households. The general status of women in these countries does not reflect this contribution in any way.

Women's rights and access to land, credit and education in developing countries is critically limited as a result of legal, political and cultural discrimination along with other issues such as work load, mobility and low bargaining position in the household and broader community.

In 2008, according to the United Nations Development Program, Indonesia ranked 87th out of 108 countries in the Gender Empowerment Measure and 85th out of 157 countries on the Gender-related Development Index. Indonesian women, including the women of Southeast Sulawesi, continue to face inequitable and unacceptable economic, political, cultural and social discrimination as a result of their gender. ALPEN is committed to changing this unjust and exploitative situation.

ALPEN'S VISION

To achieve equal rights and opportunities for women in all aspects of life.

ALPEN'S MISSION

To defend and campaign for the rights of women, and to help eradicate all kinds of exploitation, discrimination and violence against women.





Team Alpen outside the office of the Aliansi Perempuan Sulawesi Tenggara

ALPEN'S BACKGROUND

The Women's Alliance of Southeast Sulawesi (ALPEN SULTRA)* was established on 8th April 1999 in Kendari. ALPEN was formed during a three day 'Strengthening Women in Politics' workshop (6th – 9th April 1999) which was funded by ASPPUK and ASASI. All the workshop participants agreed to establish a platform for the promotion of women's rights in the region. The organization became legally recognized on 6th October 2000 (Notary Act 21 authorized by Asbar Imran, SH).

ALPEN is an institution which has firmly positioned itself within a global context of reformation regarding women's rights and the empowerment of women. ALPEN is deeply committed to reforming current paradigms in which women are excluded from key decision-making processes and often relegated to the role of 'second class citizen' within political, economic, cultural and domestic spheres.

Over the last decade, ALPEN has diversified and extended its capacity to include a range of innovative programs and campaigns in the following areas of focus: economic development, environment, advocacy and health.

* Hereafter referred to as 'ALPEN'



ECONOMIC DEVELOPMENT

ALPEN assists the women of Southeast Sulawesi to develop and manage local economies and businesses through a range of community-based programs. These programs are aimed at creating resilient communities and improving the communities' knowledge and skills base, largely in relation to micro-finance projects. ALPEN is working to strengthen and facilitate productive economic initiatives for women, to improve the economic status of women in the community and are helping local women to build stronger community and business networks.



Case Study: Seaweed farming in Sambuli.

Alpen has been helping community groups in the Sambuli coastal area to cultivate, harvest, market and sell seaweed, along with post-harvest products such as confectionary and desserts. Approximately 30 women have been working within one of seven community groups in the area as part of this program. To increase the capacity and to further develop the skills and knowledge of these local seaweed farmers, Alpen has facilitated a number of ongoing projects and workshops, focusing on micro finance management, self-empowerment, life skills and economic independence.





ENVIRONMENT

ALPEN's environmental programs assist in developing the role of women in environmental conservation and facilitating the use of ecologically sustainable management practices.

Case study: Community teak gardens, Konsel.

ALPEN has assisted women living in four villages - Ambolodangge, Lambakara, Pamandati and Aoreo - in the Konsel district to establish teak nurseries and gardens. This project has provided education and training in the principles and practices of community based forest governance and environmentally sustainable management. This project has helped to promote local women's awareness of conservation and environmental issues along with building the capacity of local women to manage small and ecologically sustainable businesses.



ADVOCACY



ALPEN's advocacy programs aim to defend the rights of women, including women managing small businesses. ALPEN engages in policy advocacy at different organizational and governmental levels and conducts individual case handling in order to achieve this aim.

Case study. Policy advocacy: Gender budget

The gender budget program was conducted by ALPEN in collaboration with ASPPUK. This program included a series of activities, namely village-based discussions, workshops, lobbying and focus group discussions. These activities were conducted in the Kolaka and Muna districts and in the city of Kendari. This program was implemented during 2005 and 2006, and involved relevant council members, institutions (health and education agencies), community members and facilitators. This program began with a discussion about the aims of villages and associated information imbalances, the needs of marginalised communities and the need for a voice for women, children and the poor.



Representatives from each of the villages attended discussions with representatives from other community-based organisations and NGOs along with government staff from BAPPEDA (provincial planning and development department) and relevant board members. The focus of the discussions was aimed at finding out about the budget process and workshops were conducted on ways to produce a gender budget. Focus group discussions were conducted that formulated strategic steps to encourage the use of gender budgets and were observed by FITRA Sijar (an NGO specialising in transparency). Focus group discussions also revealed a number of criticisms and issues which were communicated to the relevant institutions and board members attending the forums.



Case study: Violence against women

ALPEN has been a strong advocate for ending violence against women in Southeast Sulawesi. ALPEN receives complaints from victims of sexual harassment and violence, conducts case reviews, obtains evidence relating to these events and, in partnership with legal organisations such as SP KPI, instigates appropriate actions such as organising court proceedings and lobbying at a local and provincial government level to demand the settlements of these cases. ALPEN has also been critically engaged in developing and implementing policies and regulations aimed at ending violence against the women of Southeast Sulawesi.





HEALTH

ALPEN works to develop the field of health promotion and women's reproductive health education, research, dialogue on health policy, and advocacy for a better women's health budget.

Case study: Improving public health services for poor and vulnerable communities

In 2007, ALPEN collaborated with the UNDP-BRIDGE program in facilitating a "Health rights of the poor and vulnerable groups to get optimal health services" program. This activity began with a multi-stakeholder workshop to get an overview of available health services. One goal of the workshop was to build a shared perception of the rights of poor and vulnerable communities in health services and develop common indicators of the health service as a basis for seeing levels of service provided. After the workshop, activities continued with a number of focus group discussions.

Results from these discussion indicated that the vast majority of service users complained about poor service from hospitals and from paramedics who were not sympathetic, very long waiting times – a factor closely linked to the type of insurance owned by health facilities - and poorly equipped operation rooms and wards. The focus group discussions recommended that improvement was needed in all aspects of health care, but



the most important and urgent task was identified as the encouragement of paramedics and doctors to be more friendly and more empathetic, which could be achieved easily and with minimum resources.

Hospitals began implementing various programs to improve services within 3 months. After 3 months, evaluation procedures were deployed to find out whether changes in the attitudes of paramedics and doctors was reflected in community responses. The results of this process indicated an increase in community satisfaction for the changed behaviour of medical staff in hospitals. ALPEN became a member of this monitoring team. Quarterly meetings were conducted as a forum for information-exchange, responses and achievements attained by the hospitals' management.

ORGANIZATIONAL STRUCTURE

The membership of ALPEN consists of 85 people, both female and male, who represent a diversity of professions, religions, tribes, races and educational backgrounds. The highest level of decision making in ALPEN is conducted every two years, at the ALPEN Congress.

EXECUTIVE BOARD. 2005 - 2007

DIRECTOR	Salmiah Aryana
PROGRAM MANAGER	Husnawati
SECRETARY	Maryce A. Walukou
TREASURER	Hasnia
COORDINATOR OF THE WOMEN AND ECONOMY DIVISION	Hasmida Karim
COORDINATOR OF THE WOMEN AND HEALTH DIVISION	Siti Hijranah
COORDINATOR OF THE WOMEN AND ENVIRONMENT DIVISION	Rasmawati
COORDINATOR OF THE WOMEN AND ADVOCACY DIVISION	Husnawati

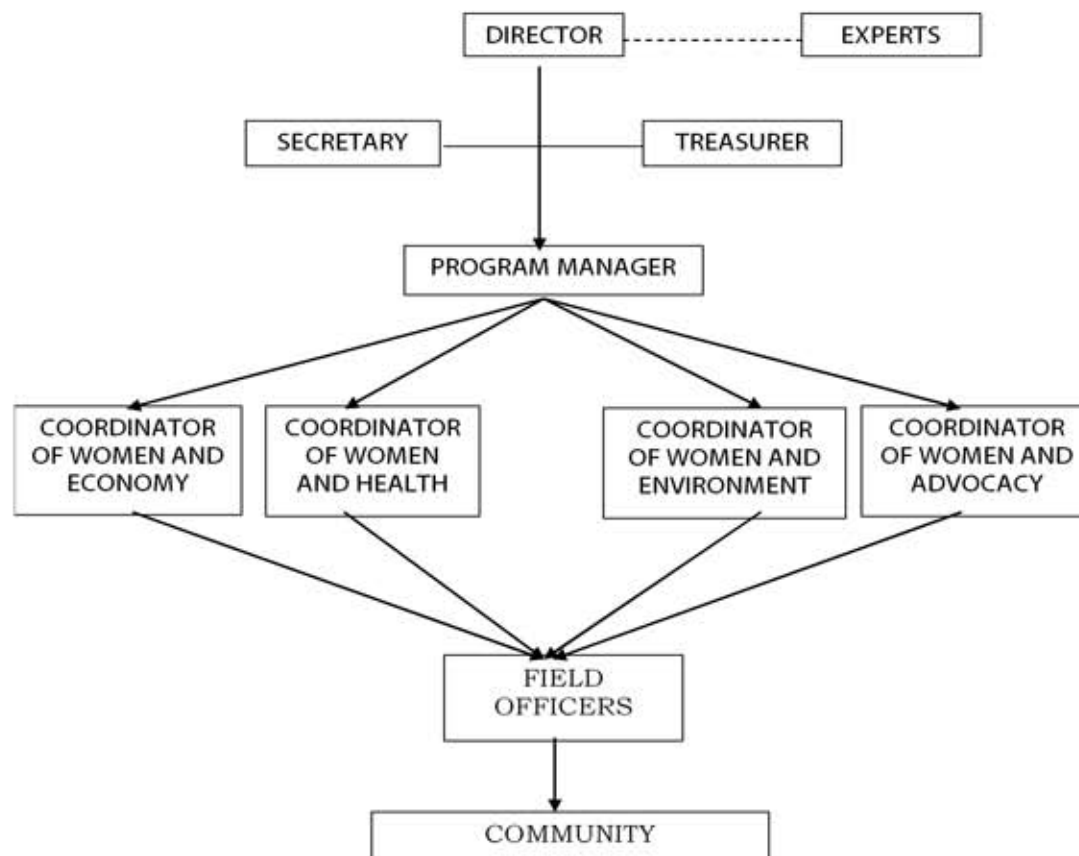
PANEL OF EXPERTS

Dra. Titiek Hartini, Msi. (Gender and small business specialist)

Ir. Jaorana Amiruddin, Msi. (Women and politics specialist)

Mukhlis Rauf (Finance and micro-credit specialist)

Ir. Anas Nikoyan (Community organization and environment specialist)



ORGANIZATION MANAGEMENT

The day-to-day management of ALPEN is conducted by eight individuals: a director, a secretary, a treasurer, a program manager of the program and four division coordinators. All of ALPEN's management staff are women. ALPEN also employs three field assistants who are also women.

DESCRIPTION OF DAILY DUTIES AND RESPONSIBILITIES

Director

- Has the primary responsibility for all activities conducted by ALPEN;
- Coordinates financial and technical components of the organization;
- Facilitates domestic and international fundraising strategies;
- Provides supportive information in regards to ALPEN's activities;
- Formulates ALPEN's policy and strategies;
- Makes recommendations to the ALPEN staff to join various activities on behalf of ALPEN in order to increase the organization's capacity;
- Facilitates strong, pro-active and strategic relationships with local, national and international governmental and non-governmental organizations and departments.

Secretary

- Responsible for all of the organization's administrative activities;
- Organizes ALPEN's correspondence and documentation;
- Receives and disseminates information about ALPEN;
- Facilitates strong, pro-active and strategic relationships with local, national and international governmental and non-governmental organizations and departments.

Treasurer

- Responsible for ALPEN's revenue and finances;
- Coordinates the documentation and movements of revenue and the issuing of finance;
- Produces a monthly financial report for the organization;
- Ensures that expenditure and submissions are in keeping with the organization's financial strategy and budget.

Program Manager

- Responsible for the implementation of ALPEN's programs;
- Facilitates funding opportunities to run ALPEN's programs;
- Produces monthly reports on ALPEN's activities;
- Organizes the planning and implementation of ALPEN's programs and activities;
- Facilitates communication and cooperative relationships with stakeholders that are connected with ALPEN's programs;
- Develops strong, pro-active and strategic relationships with local, national and international governmental and non-governmental organizations and departments.

Division Coordinator

- Responsible for the facilitation and implementation of activities and programs within each area;
- Coordinates fundraising strategies targeted at activities and programs within each respective area;
- Produces regular report on their respective activities in the field;
- Liaises with the Program Manager regarding the implementation of their respective activities and programs;
- Facilitates and implements innovations for the development of the program.

Field Officer

- Conducts group workshops and assisting the community;
- Facilitates coordination with stakeholders in the field;
- Produces regular activity reports;
- Conducts monthly fundraising to assist programs;
- Facilitates innovative directions for the development of the program;
- Ensures that all work is conducted in consultation with the Division Coordinator.

ALPEN'S ACTIVITIES

- Coordinated the 'Micro Credit Program - Training and empowering women running small businesses'. Funded by ASPPUK USAID - New Zealand.
- Facilitated the 'Strengthening the capacity of women running small businesses in the era of economic globalization' workshop. Funded by FES-WISO Jakarta. 1999.
- Survey and inventory of traditional medicines in Southeast Sulawesi, in collaboration with WHO, the Indonesian Health Department and the provincial Health Department of Southeast Sulawesi.
- Coordinated 'The role of NGOs in strengthening the managerial skills of women running small businesses' workshop. Funded by FES - WISO Jakarta. October 1999.
- Facilitated the 'Civic education for working women' training program in collaboration with JIPPRAM Kendari. Funded by ACILS. September 1999.
- Participated in a survey and mapping project targeting the significance of food shortages in Southeast Sulawesi, in collaboration with YPKM Jakarta and UNDP. 1999.
- PRA consultant in a 'Participatory Action Research Project', Lalonggaluku village. Funded by ADB SSTA 3314. May - August 2000.
- Community development consultant for the 'Potency, barriers and coastal women's development' project held in Lasolo, Tinaggea and Moramo sub-districts, in collaboration with ASASI. 2000-2001.
- Field officer for the 'Water supply and sanitation project' held in Punggaluku and Lasusua sub-district, in collaboration with ASASI. Funded by JICA MAKASSAR - PEMDA SULTRA and the Provincial Government of Southeast Sulawesi. 2002.
- Facilitated the 'Grassroots lobbying and advocacy for women' training session, in collaboration with ASASI - ASPPUK Jakarta. Funded by USAID and OTI. October 2000.
- Coordinated the 'Strengthening the role of small business women in politics through civic education' training program, in collaboration with ASASI Kendari and ASPPUK Jakarta. Funded by USAID/OTI. July - August 2001.
- Facilitated the 'Political education for women in Kendari' program, in collaboration with NGOs and JIPPRAM. Funded by ACILS. 2001
- Conducted a research project, resulting in a 'Gender Profile Book of Kendari'. Funded by the Women's Empowerment Office of Southeast Sulawesi. 2000 - 2002.
- Consultant for the 'Monitoring of health and social safety nets' program, in collaboration with the Provincial Health Department of Southeast Sulawesi. 2000 - 2001.
- Established the 'Technical assistance for the management of business and family finances' program, targeted at women running small businesses. March 2002.
- Gender and social economics consultant in the 'Strengthening coastal women's capacity for protecting and rehabilitating coral reefs and mangroves' project, Pallimae and Bopinang villages, Poleang sub-district, Buton district. Funded by GEF-SGP Jakarta. 2001 - 2002.
- Assisted in the 'Technical planning and management of the community's coral reefs (Phase 2, Southeast Sulawesi)' training program. Funded by BAPPEDA Southeast Sulawesi's Coremap and Maremap Project. February 2000.
- Member of the 'NGO Coalition for the safety of Kendari Bay', in collaboration with BEPENALDA of Kendari. June 2001.
- Consultant for the 'Intensive study of poor communities', in collaboration with SINTESA, New Zealand.
- Participated in the 'Internet applications for members of SHIP (Self Help Idea Plan)' training program. Funded by SHIPWAY, London. February 2002.
- Conducted research for the 'Data base and socialization of consumer protection laws' project. Funded by YLKI Jakarta. May 2002.
- Participated in the 'Gender perspectives in development and planning' training program, in collaboration with FITRA. Funded by the Ford Foundation. May 2002.
- Facilitated a training program focusing on the use of technology in banana chip production and targeted at women running small businesses in Kendari. Funded by SHIPWAY London.
- Assisting in the establishment of a pilot 'seeding land plot' for female vegetable vendors in Labibia. Funded by the Micro Aid Partnership. September 2003.
- Field officer for the 'Water supply and sanitation project' held in eight villages located in the Logia and Duruka sub-districts, in collaboration with ASASI and the Muna District Government. Funded by Committee Germany. 2002 - 2003.
- Monitoring team for the 'Sub-district development program' in Kolaka district, in collaboration with SINTESA. 2003 - 2004.
- Coordinated a 'Political education for women running small businesses' workshop in collaboration with ASPPUK Jakarta. January 2004.
- Facilitated the 'Political education for women' program in collaboration with PD Politic Jakarta and UNDP. February - April 2004.
- Managed the 'Women's financial institution' in Raha sub-district, in collaboration with TDH Holland and ASPPUK Jakarta. 2003 - 2008.
- Conducted research into 'Gender equity in education in the South Konawe district', in collaboration with the National Education Department of Southeast Sulawesi.
- Facilitated a 'Life skills for the small business women of Kendari' program, in collaboration with the National Education Department of Southeast Sulawesi. June - December 2004.
- Conducted a survey into the management of village finances as part of the USRADP Southeast project, in collaboration with UNDP and SINTESA. June 2004.
- Introduced the 'Law no. 23 concerning domestic violence elimination and aiming towards the Millennium Development Goals 2015' in collaboration with YPKM Jakarta, ASPPUK Jakarta and LBH APIK Jakarta.
- Coordinated the 'Gender budget program' in Muna, Kolaka and Kendari in collaboration with ASPPUK Jakarta.
- Facilitated the 'Life skills for fisherwomen' program in Poasia and Abeli sub-districts, in collaboration with the General Directorate of Alternative Education, National Education Department of Indonesia.
- Assisted with the 'Loans with low interest program for small business women' in Kolaka, Konawe, Muna and Bau-Bau, in collaboration with Jamsostek Ltd. Com. of Kendari.
- Helped to establish the 'Regional forum for small businesses in Southeast Sulawesi' in collaboration with PUPUK and JNP UKM.
- Coordinated and managed the 'Women and forests' community program. Konsel district. Funded by the Tropical Forest Trust.



- Assisted with training in capacity building with the partners of Jamsostek Ltd. Com. of Kendari. Funded by Jamsostek Ltd. Com.
- Coordinated a 'Making cakes from rice ingredients' workshop. Funded by Micro Aid.
- Facilitated the 'Health and reproduction for teenagers' program. Funded by TIFA.
- Socialisation of 'Law no. 23 concerning domestic violence elimination and aiming towards the Millenium Development Goals 2015' in Konawe, Bombana, Bau-Bau districts. Funded by the Justice Department and the Human Rights Commission of Southeast Sulawesi.
- Coordinated a life skill program for the owner of the Kendari Beauty Salon. Funded by the General Directorate of the Alternative School, Southeast Sulawesi.
- Facilitated a women's reproductive health program. Funded by the Women's Empowerment Office, National Education Office of Indonesia.
- Coordinated a 'Revolving funds program' for members of the Small Business Women's Network of Kendari (JARPUK). Funded by ASPPUK.
- Established a gender budget in Muna District.
- Developed and submitted proposals to Jamsostek Ltd. Com. of Kendari for the JARPUK of South Konawe district and Kendari.
- Facilitated FORDA UKM in joining the establishment of a regional forum for the small businesses of Southeast Sulawesi, in collaboration with PUPUK and JNP UKM.
- Provided technical assistance to JARPUK in collaboration with ASPPUK and NZAID.

- Developed and submitted proposals to relevant parties in the 'Grassroots political education for women' program.
- Developed and submitted proposals to key parties and stakeholders regarding a women's teakwood planting project in the forest communities of South Konawe district.
- Published opinion pieces in the local mass media focused on the importance of women in natural resource management.
- Developed a 'Women's awareness of the law' program in collaboration with the Program of Human Rights and the Justice Department of Southeast Sulawesi.
- Initiated the establishment of a trauma centre for victims of violence (women and children). This project will involve other key parties such as the university, other NGOs, the Police Department and the Health Department etc.
- Assisted the Human Resources Department of Southeast Sulawesi with 'How to be a public servant' programs.
- Established advocacy campaigns and handling cases of violence against women, including domestic violence.
- Assessed complaints and aspirations regarding food problems in the Southeast Sulawesi community.
- Established advocacy campaigns focused community concerns with water, electricity, telecommunications and fuel/petroleum.
- Established advocacy and educational campaigns focused on strengthening and improving women's rights in relation to small business networks.
- Established advocacy campaigns focused on consumer rights.



www.alpensultra.wordpress.com